

AR, CR and ARCR modeling for simulations and analyses of karst groundwater quality parameters

Vesna Ristić-Vakanjac, Marina Ćokorilo-Ilić, Petar Papić, Dušan Polomčić, Radisav Golubović



Дигитални репозиторијум Рударско-геолошког факултета Универзитета у Београду

[ДР РГФ]

AR, CR and ARCR modeling for simulations and analyses of karst groundwater quality parameters | Vesna Ristić-Vakanjac, Marina Ćokorilo-Ilić, Petar Papić, Dušan Polomčić, Radisav Golubović | Geološki anali Balkanskoga poluostrva | 2018 | |

10.2298/GABP1879071R

<http://dr.rgf.bg.ac.rs/s/repo/item/0007305>

Дигитални репозиторијум Рударско-геолошког факултета Универзитета у Београду омогућава приступ издањима Факултета и радовима запослених доступним у слободном приступу. - Претрага репозиторијума доступна је на www.dr.rgf.bg.ac.rs

The Digital repository of The University of Belgrade Faculty of Mining and Geology archives faculty publications available in open access, as well as the employees' publications. - The Repository is available at: www.dr.rgf.bg.ac.rs

AR, CR and ARCR modeling for simulations and analyses of karst groundwater quality parameters

VESNA RISTIĆ VAKANJAC¹, MARINA ČOKORILO ILIĆ¹, PETAR PAPIĆ¹,
DUŠAN POLOMČIĆ¹ & RADISAV GOLUBOVIĆ²

Abstract. Although an invisible component of the hydrologic cycle, groundwater generally takes precedence over other water resources in the area of drinking water supply. Among groundwater resources, karst aquifers tend to be rich in sufficiently-accessible amounts of high-quality water. During most of the year, this water requires only disinfection prior to delivery to the end user. However, in many cases extreme rainfall and/or sudden snow melt results in transient turbidity, increase in bacterial count and temporary contamination (e.g. increase in nitrate and phosphate concentrations). To be able to determine the effect of the precipitation regime on various groundwater quality parameters, it is necessary to establish continuous monitoring of the parameter of interest and certain parameters should be observed at least once a day, if not more often (continuously). Such monitoring provides sufficiently long time-series of the considered parameter, so that autocorrelation and cross-correlation analyses can be undertaken and AR, CR and ARCR modeling used for simulations and short-term forecasts. Apart from the theoretical background, the paper presents a case study of the occurrence of nitrates at a karst spring called “Banja” near the city of Valjevo, Serbia. A ten-year (1991–2000) time-series of the discharged volume of water was used in the study, as well as nitrate concentrations recorded on a daily basis. In addition, daily precipitation was gauged in the immediate vicinity of the catchment and the rainwater chemically analyzed. The analyses included nitrate concentrations in precipitation. The generated time-series were used for autocorrelation and cross-correlation analyses of nitrate concentrations in the Banja Spring pool during the entire period of monitoring, as well as in one wet and one dry year. The results are presented for all three cases, based on simulations applying AR, CR and ARCR modeling.

Key words: autocorrelation, cross-correlation, autoregressive model, cross-regressive model, autocross-regressive model, nitrates, Banja Spring, Serbia.

Апстракт. Подземне воде, иако представљају невидљиву компоненту хидролошког циклуса, када је у питању водоснабдевање у великој мери преузимају примат над осталим водним ресурсима. Од подземних вода, богате издани са довољно доступним количинама вода високог квалитета представљају карстне изданске воде формиране у оквиру карстних масива. Да би ове воде стигле од изворишта до крајњег корисника, неопходна је током већег дела година само њихова дезинфекција. Међутим, током изузетно кишних периода и/или након наглих отапања снежног покривача, долази у великом броју случајева до пролазних замућења, пораста укупног броја бактерија, као и пролазних загађења (пораста нитрата, нитрита, фосфата...). За потребе утврђивања утицаја плувиографског режима на режим појединих параметара квалитета, неопходно је успоставити континуални мониторинг параметра квалитета од интереса, стим да би се поједини параметри требало осматрати минимум једном дневно ако не и чешће (у сваком тренутку). Успостављањем мониторинга могу се формирати довољно дуги низови разматраног параметра тако да се за потребе његове анализе могу искористити аутокорељационе и кроскорелационе анализе, а за потребе њихове симулације и краткорочних прогноза се могу користити AR, CR и ARCR модели. У раду је, поред теоријских основа дат и практични пример везан за појаве нитрата у карстном врелу Бања код Ваљева. У поменути сврху искоришћен је десетогодишњи низ осматрања (1991-2000) количина истеклих вода овог врела али и концентрације нитрата које су забележене сваког дана у овом врелу. Такође, током осматрачког периода вршена су мерења количина дневних падавина у непосредној близини сливног подручја а у исто време вршене су и хемијске анализе

¹ University of Belgrade, Faculty of Mining and Geology, Department of Hydrogeology, Ђушина 7, 11000 Belgrade, Serbia.
E-mail: vesna.ristic@rgf.bg.ac.rs

² Petnica Science Center, Petnica, Serbia.

кишнице које су обухватиле и концентрације нитрата у падавинама. На основу формираних низова извршене су аутокорељационе и кроскорелационе анализе концентрација нитрата у врелу Бања за укупан осматрачки период, као и за одабрану кишну и сушну годину. За разматрана три случаја дат је и приказ добијених резултата на основу спроведених симулација применом AR, CR и ARCR модела.

Кључне речи: аутокорељација, кроскорелација, ауторегресиони модел, кросрегресиони модел, аутокросрегресиони модел, нитрати, врело Бање, Србија.

Introduction

Groundwater, the invisible component of the hydrologic cycle, currently plays a fundamental role in maintaining public health and supporting industry and agriculture, as well as entire ecosystems (PETTITA et al., 2015). The importance of groundwater resources is corroborated by the fact that in most of Europe (more than 50% of European countries), groundwater accounts for 70% or more of the public water supply (HARTAI, 2016*). From a groundwater quality perspective, water resources formed in karst are specific and generally feature high quality that does not require a lot of spending to ensure compliance with drinking water standards (STEVANOVIĆ et al., 2011). The reasons for this high quality certainly lie in the fact that karst massifs are generally inaccessible, unpopulated and at some distance from large urban agglomerations.

A karst aquifer is a highly dynamic phenomenon in spatial and temporal terms. The regime of a karst aquifer is driven by a series of factors: the geologic framework; structural, tectonic, geomorphological and hydrogeologic characteristics of the setting; and climate. The most important features are (RISTIĆ, 1995):

- the thickness of the carbonate rock complex,
- the spread of the carbonate rocks,
- the tectonic activity that led to the development of regional fault structures, macro and micro fracturing, dipping of strata, etc.,
- the karstification process and the creation of above-ground and underground morphological features,
- groundwater recharge, flow and discharge,
- the precipitation and temperature regimes in the area,
- the distribution and nature of vegetation, and the like.

All of the above govern the rate of karst aquifer recharge, groundwater flow, discharge regime, variations in physical and chemical characteristics of groundwater, etc. Based on the duration and intensity of changes caused by climate factors, we distinguish perennial, annual, seasonal, daily and hourly regimes, or variations in the quantity and/or quality parameters in these time intervals.

From a drinking water supply perspective, daily fluctuations of a certain parameter are definitely the most important aspect, although seasonal and annual fluctuations are not far behind. On the one hand, daily

variations in qualitative and quantitative parameters of karst groundwater can be slight. On the other hand, meteorological factors (early and rapid snow melt or protracted rain) can cause a sudden increase in, primarily, karst spring discharge, but also quality parameters (e.g. turbidity and total bacteria). This shows that the correlation between precipitation and discharge, or between precipitation and a quality parameter of the karst spring, can be diverse (RISTIĆ, 2007; RISTIĆ et al., 2012a). As a result of catchment response, spring discharge hydrographs can be very steep and of short duration or, conversely, their receding limb can exhibit a very mild slope (RISTIĆ VAKANJAC, 2015). Between these two extremes, there is a large number of sub-variants and combinations. The same applies to plots of karst groundwater quality parameters as a function of time.

Apart from monitoring quantitative parameters, which are among the major components of the karst aquifer regime, it is also necessary, if possible, to establish monitoring of physical properties (temperature, color, odor, taste, etc.); chemical, bacterial and gas compositions; radioactivity; and the like. Sampling of karst groundwater is not an easy task because it is not readily accessible as it tends to occur in areas difficult to reach. Also, the groundwater samples required for analyses need to be transported to an accredited laboratory. In addition, the entire undertaking, from the field trip to the lab work, is rather costly. As a result, karst groundwater tends to be sampled once a month or even once a season. However, sudden changes in certain quality parameters require daily or even more frequent observation (every 12 hours, 6 hours, or continuously). Monitoring of a certain quality parameter allows for the generation of sufficiently long time-series, such that autocorrelation and cross-correlation analyses can be used for assessment purposes, as well as AR, CR and ARCR models for simulations. The presented models are developed by N. KREŠIĆ and the methodology used in this paper is presented in details in several articles (KREŠIĆ, 1994, 1997, 2007).

Theoretical background

Autocorrelation analysis

In the case of a certain quality/quantity parameter of the karst spring regime, it is evident that the current

* HARTAI, E. 2016. Inventory of information sources (D1.4), PPT at the KINDRA orientation workshop for national experts, Seville (February, 2016).

value tends to be affected by the value recorded yesterday, two days ago, three days ago, etc. Autocorrelation analysis is used to define this type of correlation and effect – to analyze the influence of a variable on itself. Autocorrelation is the effect of a random variable X (in the specific case karst spring discharge, spring pool water level, groundwater level, turbidity, nitrate concentration, total bacteria, etc.) on itself at a time step of 1, 2, 3, 4, ... n . The most often used time step is one day, but it can also be expressed in weeks, months, etc. The strength of correlation between time-series is expressed via the correlation coefficient r , derived from the equation (KREŠIĆ & STEVANOVIĆ, 2010):

$$r_k = \frac{\frac{1}{n-k} \sum_{i=1}^{n-k} (x_i - x_{av}) \cdot (x_{i+k} - x_{av})}{\frac{1}{n} \sum_{i=1}^n (x_i - x_{av})^2} \quad (1)$$

where: n is the number of data points, x_{av} is the average value of the sample, and x_i is the value of the random variable at time $t=i+k$. The resulting autocorrelation coefficients for different time steps, as a function of the time steps, constitute an autocorrelogram.

Cross-correlation analysis

With regard to the effect of precipitation, it should be noted that a raindrop that reaches karst and carries certain chemical information received in the atmosphere, requires some time to reach the aquifer and then, as part of the aquifer, to travel down privileged pathways to the spring (RISTIĆ VAKANJAC, 2015). Along the way, it interacts with the ground surface and the geologic setting, and changes its own chemical composition. It also entrains certain deposited components that lay dormant in karst conduits and caverns during a dry period. As such, the quality of karst groundwater varies and, if we exclude the anthropogenic impact and excessive accidental pollution, largely depends on the precipitation regime.

Based on the above, it is safe to say that spring flow (or any other component of the karst spring regime) is more or less influenced by precipitation (or any other water input), and this influence can be delayed for a variety of reasons (KREŠIĆ & STEVANOVIĆ, 2010). Cross-correlation analysis is used to assess the effect of mutually dependent variables at different time steps. The cross-correlation coefficient for any time step can be obtained from (PROHASKA, 2006; KREŠIĆ & STEVANOVIĆ, 2010):

$$r_k = \frac{COV(x_i, y_{i+k})}{\sqrt{VAR(x_i) \cdot VAR(y_i)}} \quad (2)$$

where: COV is the covariance between two time-series, x_i is the independent variable (in the specific case the amount of daily precipitation), y_i is the dependent variable – time-series of the daily average values of the analyzed quality or quantity parameter, $VAR(x_i)$ and $VAR(y_i)$ are the variances of the two time-series. The covariance is calculated applying the equation

$$COV(x_i, y_{i+k}) = \frac{1}{n-k} \sum_{i=1}^{n-k} (x_i - \bar{x}) \cdot (y_{i+k} - \bar{y}_{i+k}) \quad (3)$$

and the variances of the time series from

$$VAR(x_i) = \frac{1}{n-k} \sum_{i=1}^{n-k} (x_i - \bar{x})^2 \quad (4)$$

$$VAR(y_i) = \frac{1}{n-k} \sum_{i=1}^{n-k} (y_{i+k} - \bar{y}_{i+k})^2 \quad (5)$$

The cross-correlation coefficients as a function of different time steps constitute a cross-correlogram.

Autoregressive (AR), cross-regressive (CR) and autoregressive-cross-regressive models (ARCR)

Autoregressive (AR) models can be used to simulate (estimate) karst spring discharges or concentrations of a quality parameter, where X_t is the predicted parameter at time t and the independent variables X_{t-1} , X_{t-2} , ... X_{t-k} stand for the analyzed parameter 1, 2, ... k days earlier. The equation is as follows (KREŠIĆ & STEVANOVIĆ, 2010; RISTIĆ VAKANJAC, 2015):

$$X_t = a + b_1 \cdot X_{t-1} + b_2 \cdot X_{t-2} + \dots + b_k \cdot X_{t-k} \quad (6)$$

where a , b_1 , b_2 ... b_k are model parameters.

Cross-regressive (CR) modeling can be used for the same purpose, based on the same principle, where the dependent variable X_t also represents the concentration of a quality parameter at time t . Independent variables Y_{t-1} , Y_{t-2} , ... Y_{t-n} denote precipitation 1, 2, ... days earlier or the concentration of the considered parameter in precipitation. The equation is (KREŠIĆ & STEVANOVIĆ, 2010; RISTIĆ VAKANJAC, 2015):

$$X_t = a + b_1 \cdot Y_{t-1} + b_2 \cdot Y_{t-2} + \dots + b_n \cdot Y_{t-n} \quad (7)$$

where a , b_1 , b_2 ... b_n are also model parameters.

And, finally, the above two models combined are the most frequently used ARCR model for simulations and short-term forecasts (AR + CR = ARCR), whose

general equation is (KREŠIĆ & STEVANOVIĆ, 2010; RISTIĆ VAKANJAC, 2015):

$$X_t = a + b_1 \cdot X_{t-1} + \dots + b_k \cdot X_{t-k} + c_1 \cdot Y_{t-1} + c_2 \cdot Y_{t-2} + \dots + c_n \cdot Y_{t-n} \quad (8)$$

where a , b_1 , $b_2 \dots b_k$, c_1 , $c_2 \dots c_n$ are also model parameters.

Study area – karst spring “Banja” near Valjevo

Population growth and industrial and agricultural development are having an increasing impact on the entire ecosystem. The quality of air, water and soil is changing in the negative direction and the biocenosis is under increasing stress. Nitrogen compounds, which are generally a result of the chemical industry, application of fertilizers, exhaust gases, and the like, have been classified as pollutants extremely harmful to human health (RISTIĆ VAKANJAC et al., 2012). On the other hand, frequent bacterial contamination of water, due to natural processes but mostly as a result of human activity (e.g. illegal dumps), can also have a major impact on public health.

With this in mind, the catchment of the Banja Spring (source of the Banja River) was selected in 1990 as a test site to monitor qualitative parameters and assess the effect of precipitation on them. There were multiple reasons, but the most important were:

1. the immediate vicinity of the Petnica Research Station (PRS), where the necessary analyses were performed, as well as easy access to the spring (PRS is located about 500 m from the Banja Spring - Fig. 1);

2. the proximity to an urban agglomeration – the city of Valjevo (7 km as the crow flies), which is an industrial center and has a population of 60,000 within the city fabric according to the 2014 census, and more than 90,000 including the extended area; and

3. crop farming, rural households and a relatively small livestock farm within the spring catchment (Figs. 2 and 3).

In January 1991, a dam and staff gauge were installed at the Banja Spring for water level tracking, as well as a rain gauge at PRS for precipitation monitoring in the catchment. Sampling for hydrochemical analyses of the spring water was conducted daily. When there was precipitation, hydrochemical analyses also included meteoric water. As a result, the spring discharge and quality parameters (flow rate, temperature, pH, FTU, electrical conductivity, suspended sediment, Ca, Mg, Na, K, Cl, HCO₃, SO₄, NO₃, and total bacteria) were monitored from 1991 to 2000. In parallel, precipitation chemism was also observed, including (apart from precipitation depth) pH, electrical conductivity, Ca, Mg, HCO₃, SO₄, NO₃, and PO₄.

The Banja Spring catchment is located in western Serbia, 7 km from the city of Valjevo (to the east-



Fig. 1. Petnica Cave and Banja Spring.



Fig. 2. Livestock farm in the Banja Spring catchment.



Fig. 3. Crop fields in the Banja Spring catchment.

southeast) and in the immediate vicinity of the Petnica Research Station (Fig. 4). The elevations of the catchment are from 181 m (point of spring discharge) to

slightly more than 600 m above sea level. Most of the catchment is comprised of massive Middle Triassic limestones, partly covered by Miocene sediments composed of marls and red bituminous schists (Fig. 4).

ducted tracing tests on several occasions and confirmed that there was a connection between the two streams and the Banja Spring (GOLUBOVIĆ et al., 2014; RISTIĆ VAKANJAC et al., 2015).

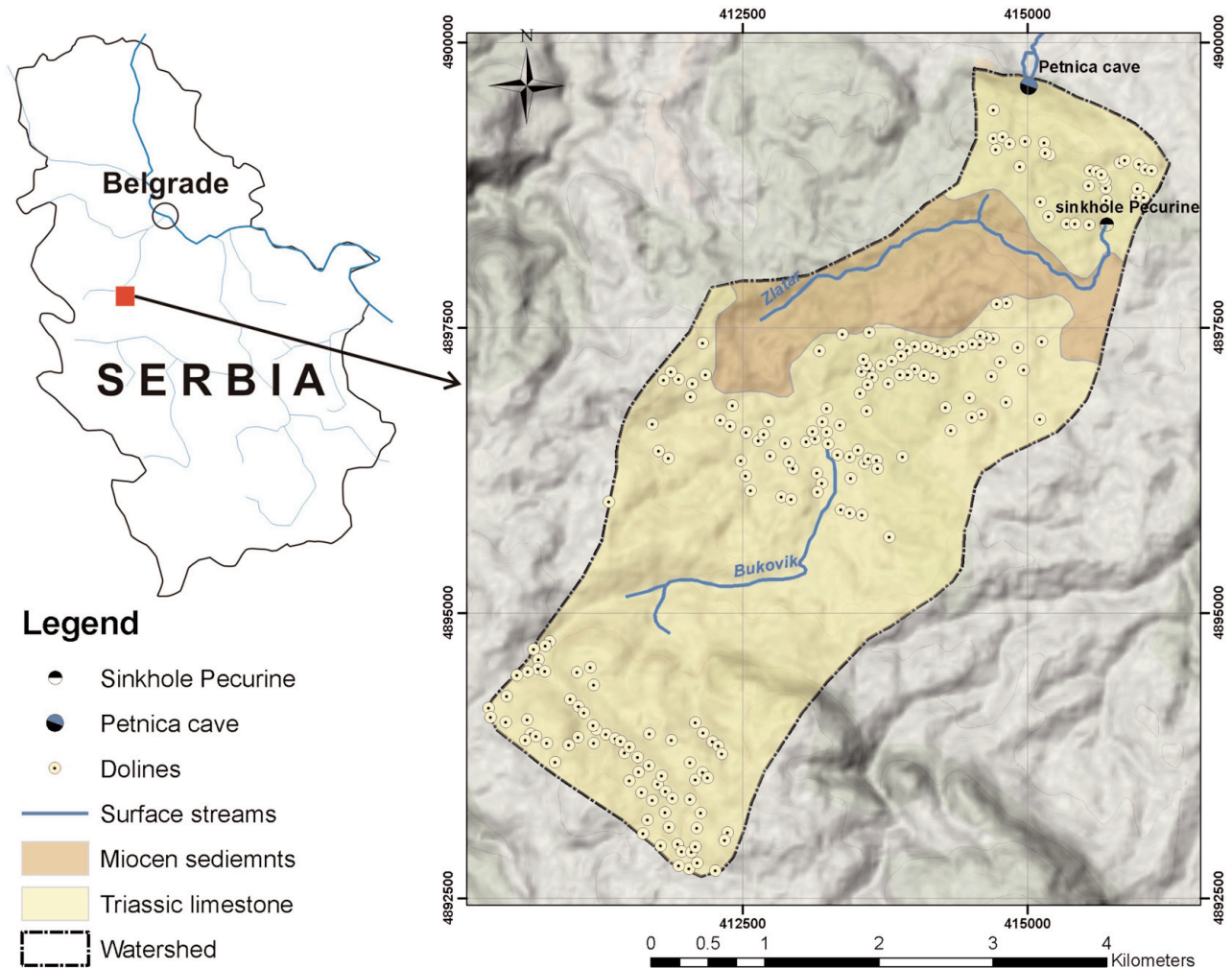


Fig. 4. Location and hydrogeological map of Banja Spring watershed (RISTIĆ VAKANJAC et al. 2015).

The above-ground morphological features of the Triassic limestones include numerous sinkholes (12 per km² on average), which are mostly found in series. Among underground features, there are caves and fractures; the Petnica Cave is the most important feature and the place where the Banja Spring emerges (Fig. 1).

There are two surface streams in the Banja Spring catchment: the Zlatar and the Bukovik. The Zlatar is formed in Miocene sediments and sinks in a ponor, at Pecurine, when it enters a karst substrate. The Bukovik rises in Triassic limestones, in an area where karstification is low (no sinkholes), Fig. 1b. Its lower course is in a highly-karstified part of the limestones, where it follows the linear occurrence of sinkholes, slowly depletes and ultimately dries out. PRS has con-

Assessment of nitrates

Animal wastes from livestock farms, fertilizers, pesticides, and herbicides, as well as the lack of sewerage system for wastewater, significantly influences the increased amount of rural pollutants in groundwater, including nitrates which belong to this group of pollutants. Waters of improper chemical constitution, used for irrigation of agricultural soil (deposits) covering karst aquifers, could also be placed among rural pollutants when leakage is present (KREŠIĆ et al. 1992).

Nitrates were certainly one of the most interesting parameters of the Banja Spring water quality, which were monitored in both karst groundwater and precipitation (Figs. 5 and 6). Before the monitoring at the

Banja spring was initiated in 1991, sampling had been sporadically carried out during the period from 1976 to 1988 in order to determine concentration of nitrates in karst waters. According to the available information, the maximum concentration of nitrates in the karst spring Banja varied within the interval from 6 mg/dm³ to 27 mg/dm³ during this period (KREŠIĆ et al., 1989; PAPIĆ et al., 1991). Therefore, the maximum concentration of nitrates in the karst spring Banja increased about 4.5 times during the twelve years period.

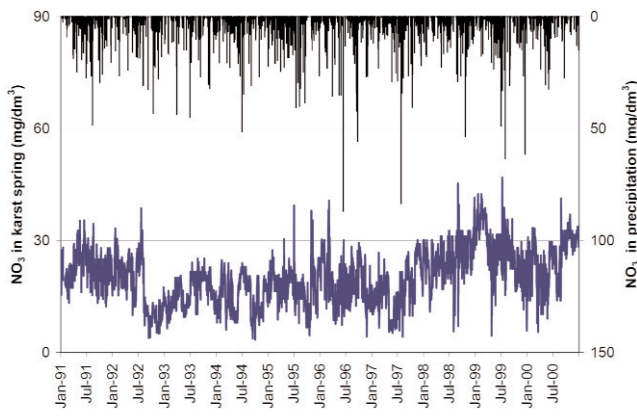


Fig. 5. Parallel plots of nitrate concentrations in the Banja Spring pool and in total daily precipitation (modified after, RISTIĆ VAKANJAC et al. 2013).

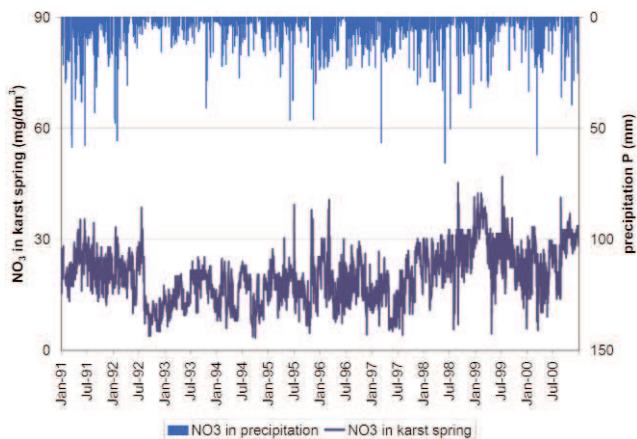


Fig. 6. Parallel plots showing nitrate concentration fluctuations in the Banja Spring pool and in precipitation (modified after, RISTIĆ VAKANJAC et al. 2013).

Over the 10-year monitoring period (1991–2000), the perennial average nitrate concentration was 20.1 mg/dm³ and the annual averages were in the interval from 15.1 mg/dm³ (1994) to 27 mg/dm³ (1998). On a daily basis, the lowest concentration was recorded on October 1st 1994 (3.4 mg/dm³) and the highest (46.9 mg/dm³) was on July 9th 1999 (RISTIĆ VAKANJAC et al., 2013). The perennial average nitrate concentration in precipitation was 7.7 mg/dm³ and on an annual

basis from 5.06 mg/dm³ (1993) to 12.8 mg/dm³ (1991). The highest nitrate concentration in precipitation, of 65.6 mg/dm³, was recorded on June 1st 1998 and the lowest (0.05 mg/dm³) was on May 5th of the same year (1998) (RISTIĆ VAKANJAC et al., 2013). It should be noted that the highest nitrate concentrations in precipitation are associated with the first day of a rainfall episode and that they increase with the length of time between two episodes. For example, a sample collected on the first day of a rainfall episode (when the interval between two episodes was one day or more ($t \geq 1$)) and a sample taken after there was no precipitation for a minimum of five days ($t \geq 5$) revealed that the nitrate concentration was about 18% higher in the case of $t \geq 5$, compared to $t \geq 1$ (RISTIĆ VAKANJAC et al., 2013). The situation was similar with standard deviation, which was about 17% higher in the specific case.

To simulate nitrate concentrations in the karst spring pool, first autocorrelation and cross-correlation analyses of the concentrations were undertaken, for the entire period (10 years) and for each year, to assess the occurrence of nitrates at the karst spring during dry and wet years.

The simulations resulted in an autocorrelogram of the nitrate concentrations of the Banja Spring for the entire period, as shown in Fig. 7. The autocorrelograms for the selected wet and dry year are shown in Fig. 8. It follows from these figures that the autocorrelation coefficient declines with increasing time lag. With regard to the entire period, the sample was extremely autocorrelated. It is apparent (in Fig. 7) that the autocorrelation coefficient was greater than 0.3 even after 100 days. The situation was similar in the selected cases (dry and wet year). In the dry year, the autocorrelogram declined slowly and the autocorrelation coefficient dropped to below 0.2 only after 40 days (i.e. the memory of the system was up to 40 days). In the wet year, the autocorrelogram was steeper and the memory up to 12 days. More precisely, after 12 days the nitrate ion concentrations in the Banja Spring pool become independent variables (there was no persistence and the time series had no memory) (KREŠIĆ & STEVANOVIĆ, 2010).

With regard to cross-correlation, the effect of precipitation totals on nitrate concentrations in the spring pool were analyzed for the entire period (Fig. 9) and separately for the wet and the dry year (Fig. 10). In addition, the effect of nitrate concentrations in precipitation on the nitrate concentrations in the spring pool were analyzed following the same principle – the cross-correlogram for the entire period is shown in Fig. 11 and for the wet and the dry year in Fig. 12.

The correlation coefficient in both cross-correlation analyses of the entire study period was extremely low (less than 0.1), which indicated that neither precipitation nor nitrate concentrations in precipitation had a significant effect on the occurrence of nitrates at the

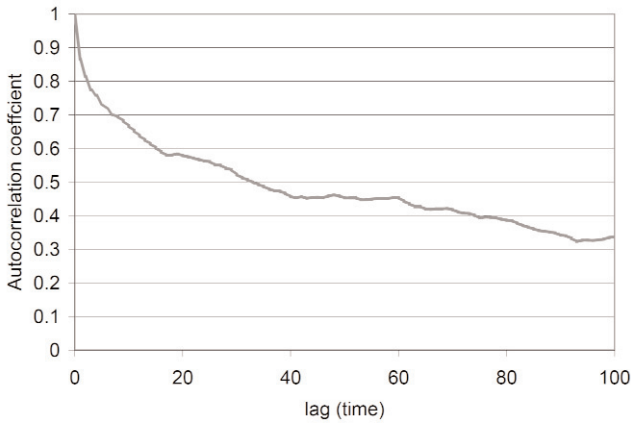


Fig. 7. Autocorrelogram of NO₃ concentrations in the Banja Spring pool (entire study period).

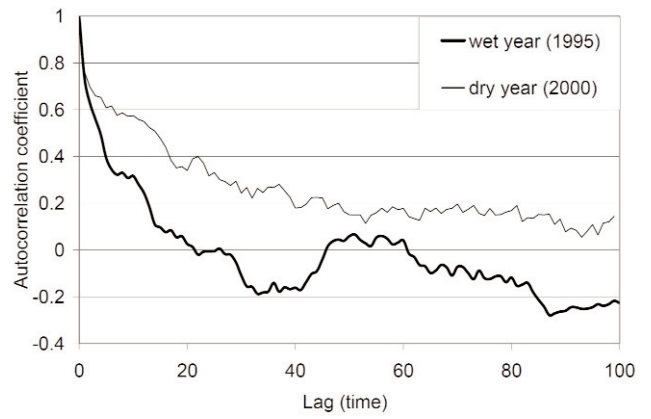


Fig. 8. Autocorrelogram of NO₃ concentrations in the Banja Spring pool (one wet and one dry year).

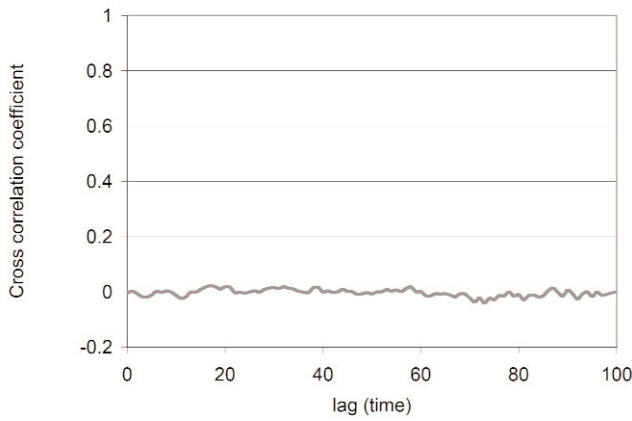


Fig. 9. Cross-correlogram of NO₃ concentrations in the Banja Spring pool and total precipitation (entire study period).

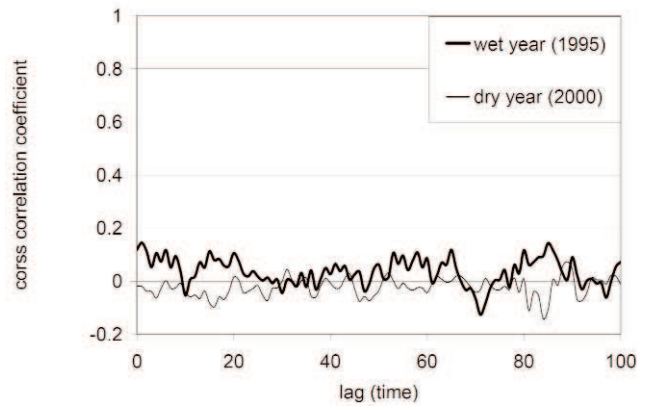


Fig. 10. Cross-correlogram of NO₃ concentrations in the Banja Spring pool and total precipitation (one wet and one dry year).

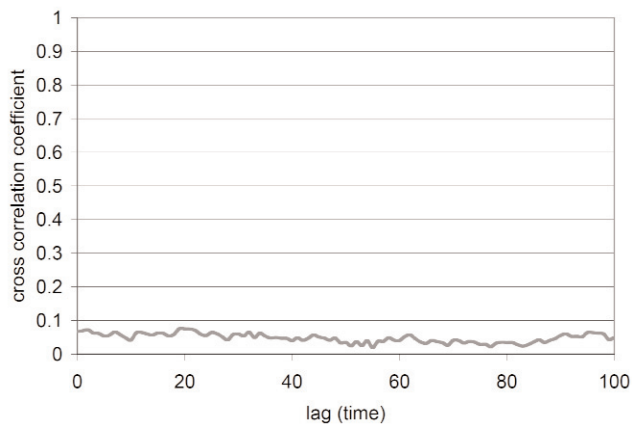


Fig. 11. Cross-correlogram of NO₃ concentrations in the Banja Spring pool and in precipitation (entire study period).

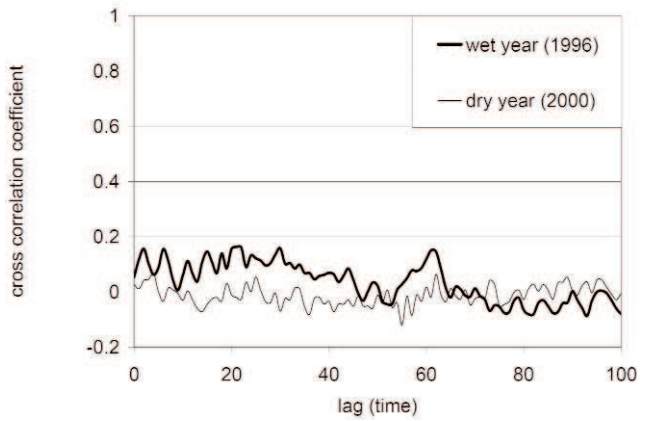


Fig. 12. Cross-correlogram of NO₃ concentrations in the Banja Spring pool and in precipitation (one wet and one dry year).

spring. The correlation was somewhat stronger when each year as analyzed separately, especially in the case of wet years, although the correlation coefficients still remained below the threshold value of 0.2. The reason for such cross-correlograms is certainly nitrate pollution within the Banja Spring catchment, as a result of application of fertilizers, the livestock farm, and rural households with no access to public sanitation.

Simulation of nitrate concentration in the Banja Spring pool

All three models: AR, CR and combined ARCR, were used to simulate nitrate concentrations in the water of the Banja Spring. The resulting values showed that the correlation coefficients obtained with the AR model for nitrates in the karst spring pool were much higher than those of the CR model (Figs. 13, 14 and 15). The AR model coefficients based on data for the entire study period were from 0.866 (order 1) to 0.882 (order 15) and were the result of a long memory (Fig. 7). Conversely, the CR model coefficients were extremely low:

– from 0.004 (order 1) to 0.036 (order 15) – simulation of nitrate concentrations in the spring pool as a function of daily precipitation totals over the entire study period, and

– from 0.065 (order 1) to 0.183 (order 15) – simulation of nitrate concentrations in the spring pool as a function of nitrate concentrations in precipitation over the entire study period.

The application of these models on an annual basis

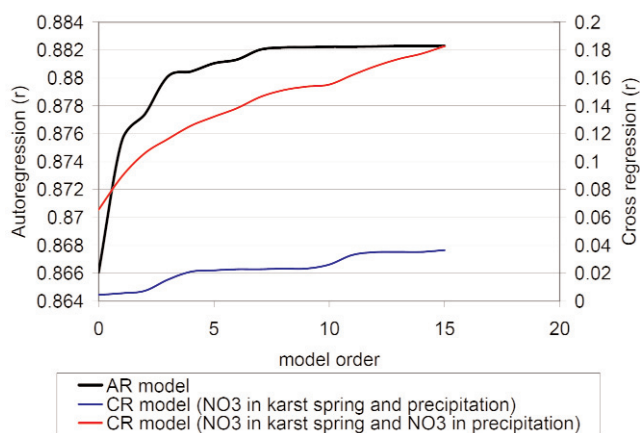


Fig. 13. Parallel plots of a simple autoregressive model and cross-regressive model (entire study period).

and to one wet and one dry year provided slightly better results. The AR model correlation coefficients were still high but the simulations were better for dry years (higher correlation coefficients). Relative to the entire study period, the CR model yielded much high-

er correlation coefficients for both the dry and the wet year, but it should be noted that in this case the simulations were better for the wet years (higher correlation coefficients, Figs 14 and 15).

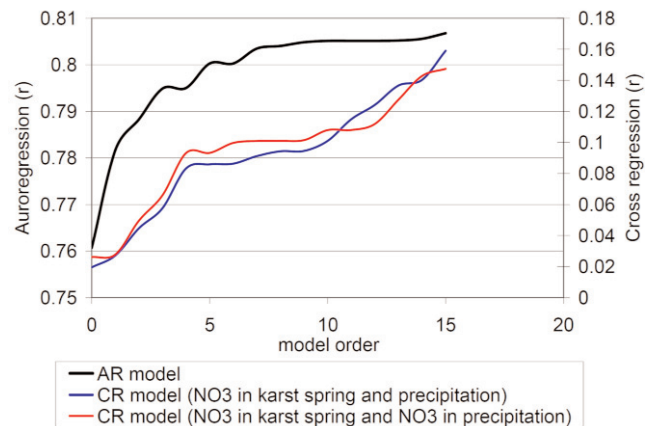


Fig. 14. Parallel plots of a simple autoregressive model and cross-regressive model (dry year).

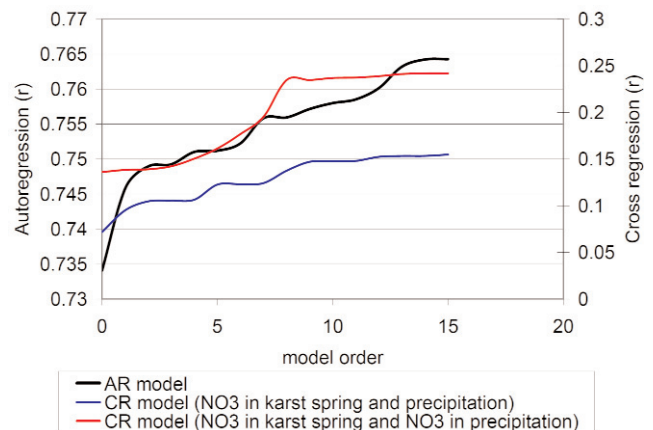


Fig. 15. Parallel plots of a simple autoregressive model and cross-regressive model (wet year).

In general, the combined ARCR model should have produced the best results. However, because the simulation results of the AR model were good and those of the CR model much poorer (for the entire study period), the ARCR model correlation coefficients were roughly equal to those of the AR model. For example, when nitrate concentrations in the spring pool were simulated as a function of nitrate concentrations in the spring pool on the previous days and those in precipitation on the previous days, the ARCR model correlation coefficients were:

– from 0.866 (model order 1) to 0.881 (model order 7) for the entire study period,
– from 0.762 (model order 1) to 0.804 (model order 7) for the dry year, and

– from 0.734 (model order 1) to 0.756 (model order 7) for the wet year.

Figure 16 is a parallel representation of measured and calculated nitrate concentrations for model order 1.

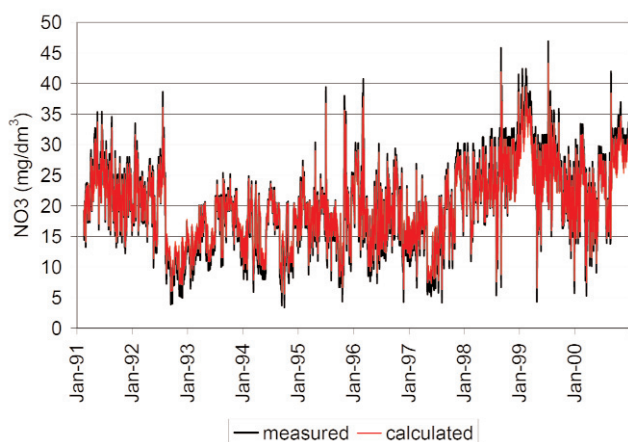


Fig. 16. Parallel representation of measured and calculated nitrate concentrations in the Banja Spring pool.

Conclusion

Assessments of the regimes of quantitative and qualitative parameters of karst groundwater provide better insight into the karst system itself, types of hydrogeological structures, method of recharge, dependence on precipitation, regime of the analyzed parameter, etc. For any kind of regime assessment aimed at defining an appropriate simulation and/or short-term forecasting model, the first requirement is a sufficiently long time-series. Such an assessment was enabled by ten-year monitoring of the qualitative and quantitative parameters of karst groundwater that emerges at the Banja Spring near Petnica (Valjevo), and of precipitation by means of a rain-gauge station installed at the Petnica Research Station. The assessment was conducted for the entire period of monitoring (1991–2000), as well as for one dry and one rainy year. The correlation coefficients in the autocorrelation analysis of nitrate concentrations in the spring pool were found to decrease with increasing time lag in all three cases. The memory of the system was very long – more than 100 days – for the entire period. The autocorrelogram of the dry year exhibited a slower decline than that of the wet year. The memory in the case of the dry year was about three times longer than that of the wet year. The strong autocorrelation of the time-series indicated that there was a strong inter-dependency of the random variable (in the specific case nitrate ion concentration), resulting in a weak dependency in cross-correlation analyses (precipitation – nitrate concentration in the spring pool or nitrate concentration in precipitation – nitrate concentration in the spring pool). The undertaken cross-correlation analyses corroborated

this. The correlation coefficients in the cross-correlation analyses were extremely low (less than 0.1), meaning that neither precipitation nor nitrate concentrations in precipitation had a significant effect on nitrate concentrations in the spring pool. When each year was studied separately, the resulting correlation was somewhat stronger, especially in the wet year, although the correlation coefficients remained below the threshold value of 0.2. The reason for the low cross-correlation coefficients was definitely nitrate pollution in the Banja Spring catchment as a result of application of crop fertilizers and the presence of a livestock farm and rural households with no access to public sanitation.

In view of all the above and based on the results of the auto- and cross-correlation analyses, AR models were expected to produce much better results than CR models. The following models were used to simulate nitrate concentrations in the Banja Spring pool: autoregressive – AR, cross-regressive – CR, and combined ARCR models. The correlation coefficients derived from the AR and CR models showed that in the case of nitrates, the AR model yielded much higher correlation coefficients than the CR model (Figs. 13, 14 and 15). The AR model coefficients based on the entire study period were from 0.866 (with one 1st order random variable) to 0.882 (equation of the 15th order – 15 random variables), and were a result of a long memory (Fig. 7). Conversely, the CR model coefficients were extremely low:

- from 0.004 (1st order eq.) to 0.036 (15th order eq.)
- simulation of nitrate concentrations in the spring pool as a function of daily precipitation over the entire study period, and
- from 0.065 (1st order eq.) to 0.183 (15th order eq.)
- simulation of nitrate concentrations in the spring pool as a function of nitrate concentrations in precipitation over the entire study period.

The situation was somewhat better when the models were applied on an annual basis and to one dry and one wet year. The correlation coefficients derived from the AR model were still high but the simulation was better (higher correlation coefficients) for dry years. Relative to the entire study period, the CR models yielded much higher correlation coefficients for both the dry and the wet year, although it should be kept in mind that the simulations were better (the correlation coefficients were higher) for wet years (Figs. 14 and 15).

The combined model – ARCR should generally have yielded the best results. However, because the AR model produced good results and the CR model much poorer results (for the entire study period), the correlation coefficients of the ARCR model were roughly equal to those of the AR model. For example, in the case of nitrate concentrations in the spring pool as a function of nitrate concentrations in the spring pool on previous days and in precipitation on previous days, the ARCR model correlation coefficients were:

– from 0.866 (1st order eq.) to 0.881 (7th order eq.) for the entire study period,
 – from 0.762 (1st order eq.) to 0.804 (7th order eq.) for the dry year, and
 – from 0.734 (1st order eq.) to 0.756 (7th order eq.) for the wet year.

Acknowledgements

The authors greatly acknowledge the anonymous reviewers for carefully reading the manuscript and providing constructive comments that have led to an improved paper.

References

- EISENLOHR, L., KIRALY, I., BOUZELBOUDJEN, M. & ROSSIER, I. 1997. Numerical versus statistical modeling of natural response of a karst hydrogeological system, *Journal of Hydrogeology*, 202: 244–262
- GOLUBOVIĆ, R., RISTIĆ VAKANJAC, V. & PAPIĆ, P. 2014. Uticaj padavina na hidrohemijski režim vrela Banje kod Petnice [The effect of precipitation on the hydrochemical regime of Banja spring at Petnica – in Serbian]. In STEVANOVIĆ, Z. (Ed.). *Comptes rendus des séances de la Société Serbe de géologie pour l'année 2013*, 145–158.
- KREŠIĆ, N. 1994. Stochastic properties of spring discharge in different karst environments. In: DUTTON, A.R. (Ed.). *Toxic Substances and the Hydrologic Sciences*, American Institute of Hydrology, Minneapolis, 582–590.
- KREŠIĆ, N. 1997. *Quantitative Solutions in Hydrogeology and Groundwater Modeling*. CRC Press/Lewis Publishers, Boca Raton, FL, 461 pp.
- KREŠIĆ, N. 2007. *Hydrogeology and Groundwater Modeling*, Second Edition, Taylor & Francis, 828 pp.
- KREŠIĆ, N., PAPIĆ, P. & GOLUBOVIĆ, R. 1989. The influence of precipitation on the quality of karst groundwater in the industrial zones. In: SAHUQUILLO, A., ANDREU, J. & O'DONNELL, T. (Eds.). *Proceedings of the symposium Groundwater Management: Quantity and Quality*, October 2-5 1989, Benidorm, Spain, IAHS Publication No. 188, 153–159.
- KREŠIĆ, N., PAPIĆ, P. & GOLUBOVIĆ, R. 1992. Elements of groundwater protection in a karst environment, *Environmental Geology and Water Sciences*, 20 (3): 157–164.
- KREŠIĆ, N. & STEVANOVIĆ, Z. 2010. *Groundwater hydrology of springs: engineering, theory, management and sustainability*, Amsterdam, Boston, Butterworth-Heinemann, 573 pp.
- PAPIĆ, P., KREŠIĆ, N., & GOLUBOVIĆ, R. 1991. Acid rains and their influence on the quality of groundwater of Petnica karstic spring near Valjevo: Yugoslavia, Belgrade. *Recueil des rapports du Comité pour le karst et la spéléologie, Academie Serbe des Sciences et des arts*, 4: 95–105.
- PETITTA, M., BODO, B., CASCHETTO, M., COLOMBANI, N., CORREIA, V., CSEKO, A., DI CAIRANO, M., FERNANDEY, I., GARCIA ALIBRANDI, C., HARTAI, E., HINSBY, K., MADARASY, T., MIKITA, V., GARCIA PADILLA, M., SZUCS, P. & VAN DER KEUR, P. 2015. The KINDRA project: a tool for sharing Europe's groundwater research and knowledge, *European Geologist, Journal of the European Federation of Geologist*, 40: 5–8.
- PROHASKA, S. 2006. *Hydrology, Part II*, Jaroslav Černi Institute for the Development of Water Resources and University of Belgrade, Faculty of Mining and Geology, University of Belgrade, 578 pp.
- RISTIĆ, V. 1995. Metodologija analize i prognoze izdašnosti vrela Kučajsko-beljaničkog masiva [Methodology of analysis and prognosis of yield of karst springs in the Kučaj-Beljanička Massif – in Serbian]. Unpubl. Master Thesis, Faculty of Mining and Geology, University of Belgrade, 289 pp.
- RISTIĆ, V. 2007. Razvoj simulacionog modela za proračun dnevnih isticanja iz karstnih vrela [Development of Simulation Model for Estimation of Karst Spring Daily Discharges – in Serbian]. Unpubl. PhD Thesis, Faculty of Mining and Geology, University of Belgrade, 319 pp.
- RISTIĆ VAKANJAC, V., POLOMČIĆ, D., BLAGOJEVIĆ, B., ČOKORILO, M. & VAKANJAC, B. 2012. Simulation of Karst Spring Daily Discharges, *Proceedings of the Conference on Water Observation and Information System for Decision Support - BALWOIS 2012, Ohrid, Macedonia*, 1–10.
- RISTIĆ VAKANJAC, V., PAPIĆ, P., GOLUBOVIĆ, R. & DAMNJANOVIĆ, V. 2013. Statistical Evaluation of Nitrates in Precipitation and Karst Spring flow: The Petnica Spring in Western Serbia, *TTEM - Technic Technologies Education Management*, 8 (2): 896–903.
- RISTIĆ VAKANJAC, V. 2015. Forecasting Long-Term Spring Discharge. In: STEVANOVIĆ, Z. (Ed.). *Karst Aquifers – Characterization and Engineering*, Series: Professional Practice in Earth Science, Springer International Publishing, 435–454.
- RISTIĆ VAKANJAC, V., PAPIĆ, P., GOLUBOVIĆ, R., VAKANJAC, B., ČOKORILO ILIĆ, M. & JOKIĆ, M. 2015. Karst groundwater budget and discharge regime of Banja Spring near Petnica, *Journal of Geographical Institute "Jovan Cvijic"*, SASA, 65 (1): 19–32.
- STEVANOVIĆ, Z., RISTIĆ VAKANJAC, V., MILANOVIĆ, S., VASIĆ, LJ. & PETROVIĆ, B. 2011. Značaj monitoringa podzemnih voda u karstu Srbije [The importance of groundwater monitoring in Serbian karst – in Serbian], *Proceedings of the 7th Symposium on Karst Conservation*, May 21-22 2011, Bela Palanka, Serbia, 21–28.

Резиме

Примена AR, CR и ARCR модела код анализа и симулација квалитативних параметара карстних изданских вода

Анализом режима квантитативних или квалитативних параметара карстних изданских вода постиже се бољи увид о самом карстном систему, типу хидрогеолошких структура, начину прихрањивања, зависности плувиографског режима и режима параметра који се анализира, итд. За било коју врсту анализа режима а са циљем дефинисања одговарајућег модела за симулацију и/или краткорочне прогнозе, на првом месту је неопходно поседовати довољно дуги осматрачки низ. Десетогодишњи мониторинг квалитативних и квантитативних параметара карстних вода врела Бање код Петнице (Ваљево) и падавина уз помоћ кишомерне станице постављене у оквиру круга Истраживачке станице Петница омогућио је примене поменутих анализа. Анализе су извршене на нивоу целог осматрачког периода (1991–2000) као и за сушну и кишну годину. Коефицијенти корелација код аутокорелационе анализа нитрата у врелу Бање опадају са повећањем временског корака код сва три анализирана случаја. Код укупног периода, меморија система је јако дуга и трајања је дужег од 100 дана. Аутокорелограм сушне године има блажи пад у односу на исти добијен за кишну годину, а меморија система је код сушне године око 3 пута дужег трајања него код влажне године. Добра аутокорелативност серије указује на добру међусобну условљеност вредности случајно променљиве величине (у конкретном случају концентрација нитратних јона) што за последицу има слабу условљеност код кроскорелационих анализа (веза падавине - нитрати у врелу, или веза нитрата у падавинама - нитрати у врелу). Спроведене кроскорелационе анализе су ово и потврдиле. Вредности коефицијената корелације код кроскорелационих анализа су изузетно ниске (мање од 0.1) што потврђује чињеницу да нема значајнијег утицаја ни падавина ни концентрације нитрата у падавинама на појаву нитрата у врелу. Ако посматрамо сваку годину понаособ, добија се нешто боља веза, нарочито код влажних година, мада коефицијенти корелације и даље не прелазе граничну вредност 0.2. Разлог овако добијених ниских вредности коефицијената кроскорелације су свакако присутна нитратна загађења на самом сливу врела Бање која су резултат коришћења ђубрива за пољопривредне сврхе, животињске фарме на сливу као и сеоских домаћинства која немају изграђену канализациону мрежу.

Као последица свега изнетог, сходно добијеним резултатима ауто и кроскорелационих анализа, било је за очекивати да AR модели дају знатно боље

резултате од CR. За потребе симулације концентрација нитрата у водама карстног врела Бања примењени су следећи модели: ауторегресиони - AR, кросрегресиони - CR и комбиновани ARCR модел. Добијени коефицијенти корелација за AR и CR моделе указују да AR модел за нитрате има знатно веће вредности коефицијената корелације у односу на исте добијене кросрегресионим моделом (слика 13, 14 и 15). Коефицијенти ауторегресионог модела срачунатих на основу података везаних за укупан период крећу се од вредности 0.866 (са једном случајно независном - првог реда) па до 0.882 (једначина 15-тог реда - 15 случајно независних величина) а резултат су дуготрајне меморије (слика 7). Насупрот овоме, коефицијенти кросрегресионог модела су изузетно ниских вредности и крећу се:

- од 0.004 (јед. првог реда) до 0.036 (јед. 15-ог реда) (симулација концентрација нитрата у врелу у функцији дневних сума падавина на нивоу укупног периода осматрања), и

- од 0.065 (јед. првог реда) до 0.183 (јед. 15-ог реда) (симулација концентрација нитрата у врелу у функцији концентрација нитрата у падавина на нивоу укупног периода осматрања).

Применом ових модела на нивоу једне године и за сушну и влажну годину ситуација је нешто боља. Коефицијенти корелација добијени на основу AR модела имају и даље високе вредности стим да се боље симулације (виши коефицијенти корелације) добијају за сушне године. У односу на укупан период CR модели дају и за сушну и за влажну годину знатно више вредности коефицијента корелације, стим да овде треба нагласити да су боље симулације (веће вредности коефицијената корелације) добијене за влажне године (слике 14 и 15).

Комбиновани модел – ARCR генерално би требао дати најбоље резултате. Међутим, из разлога што симулације коришћењем AR модела даје добре резултате а CR модела знатно лошије (за укупан период), коефицијенти корелације ARCR модела су приближно исти коефицијентима AR модела. Тако на пример, за случај симулације концентрација нитрата врелу у функцији концентрација нитрата регистрованих у врелу претходних дана и регистрованих у падавинама претходних дана, коефицијенти корелације за ARCR модела се крећу од:

- 0.866 (јед. 1-ог реда) па до 0.881 (јед. 7-ог реда) за податке на нивоу укупног периода,

- 0.762 (јед. 1-ог реда) па до 0.804 (јед. 7-ог реда) за податке на сушну годину, и

- 0.734 (јед. 1-ог реда) па до 0.756 (јед. 7-ог реда) за податке на влажну годину.

Manuscript received September 11, 2017

Revised manuscript accepted June 18, 2018